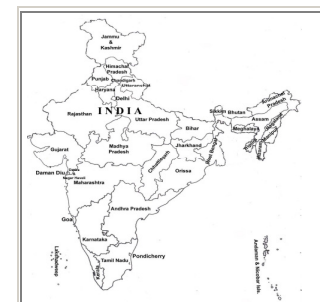


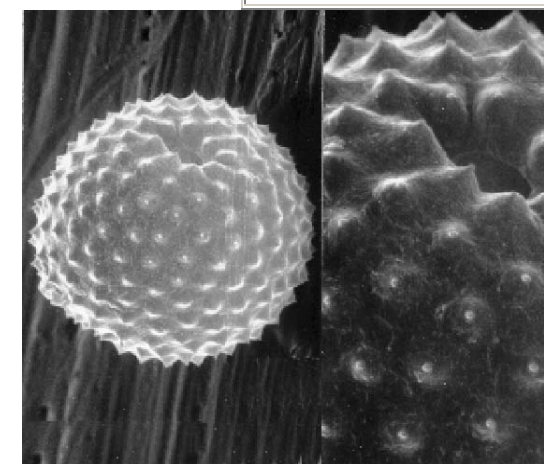
Xanthium strumarium L.

NAME : Xanthium strumarium L.
 FAMILY : Asteraceae
 LOCALITY : Kolkata & suburbs
 ALLERGENIC SEASON : Autumn (September – October)



Distribution : Through out India in plains.

POLLEN TYPE	:	Spheroidal or oblate spheroidal; trizonocolporate			
SCULPTURAL TYPE	:	Scabrate to microechinate, echinae situated on polygonal cushion bases			
SIZE IN μ	Pollen	Lumina	Muri	Sculptural element	Col.
	26(28.7)31 x 29(31.25)36 μ	-	-	Scabrate to microechinate; exine 3(3.7) 4.25 μ m; ektexine 2(2.2) 2.5 μ m, tectum 1.25(1.5)1.75 μ m, undulating endexine \leq 0.5 μ m thick	-



POLAR / EQUATORIAL RATIO	:	0.89 (0.91) 0.86				
APOCOLPIUM	:	Not distinct, 12(13.7)17 μ m across				
APERTURE		Form	Delimitation	Structure	No. of Aperture	Size / μ
	Ecto.	Colpus, tapering	Distinct,	Narrowly elliptic, sides tapering towards apocolpia tips acute, ora distinct, narrowly elliptic, equatorially elongated	3	5.25(6.9)10.5 μ m long, 2(2.4)3 μ m wide at equator
	Endo.	Porate, Circular	”	-	”	