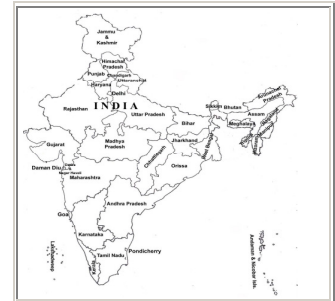


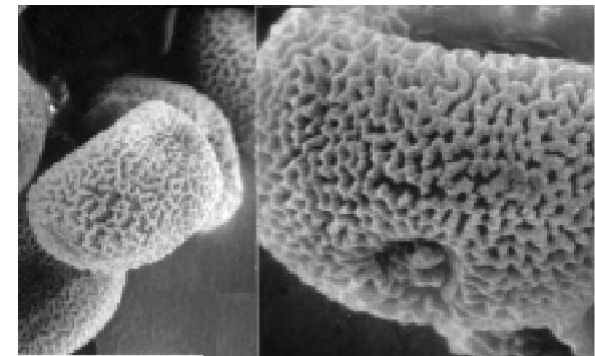
Typha angustifolia L.

NAME : Typha angustifolia L.
 FAMILY : Typhaceae
 LOCALITY : Kolkata and suburbs
 ALLERGENIC SEASON : Rainy season, Autumn (June - September)



Distribution : Through out India.

POLLEN TYPE :		Spheroidal , uniporate			
SCULPTURAL TYPE :		Reticulate, retipilate			
SIZE IN μ	Pollen	Lumina	Muri	Sculptural element	Col.
	32 (range: 23 - 35.5) μ	-	-	Exine 2.5 μ m thick, retipilate, thicker around pore, $\pm 3\mu$ m thick, sexine thicker than nexine	-



POLAR / EQUATORIAL RATIO :		-				
APOCOLPIUM :		-				
APERTURE		Form	Delimitation	Structure	No. of Aperture	Size / μ
	Ecto.	Porus	Distinct	Circular, operculate, margin faintly defined, uneven	1	4.5 μ m
	Endo.	''	''	''	''	''