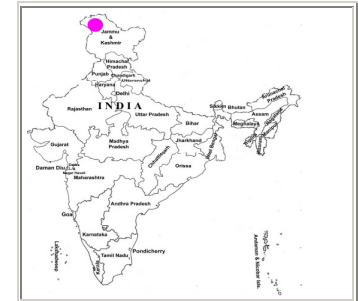


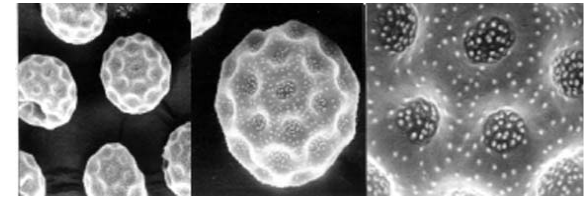
Salsola kali L.

NAME : Salsola kali L.
 FAMILY : Euphorbiaceae
 LOCALITY :
 ALLERGENIC SEASON : Summer , Rainy season (June – August)



Distribution :North West India. (Jammu & Kashmir, Ladakh at 3344 m)

POLLEN TYPE :		Spheroidal, pantoporate			
SCULPTURAL TYPE :		Spinulose			
SIZE IN μ	Pollen	Lumina	Muri	Sculptural element	Col.
	22 - 25 μ m	-	-	-	-



POLAR / EQUATORIAL RATIO :		-				
APOCOLPIUM :		-				
APERTURE		Form	Delimitation	Structure	No. of Aperture	Size / μ
	Ecto.	Porus	Distinct	-	Many	$\pm 12 \mu$ m
	Endo.	”	”	-	”	”