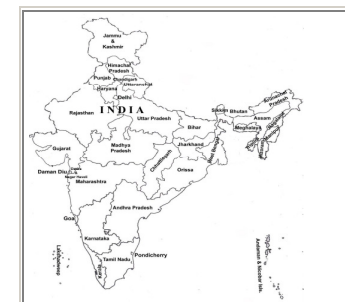


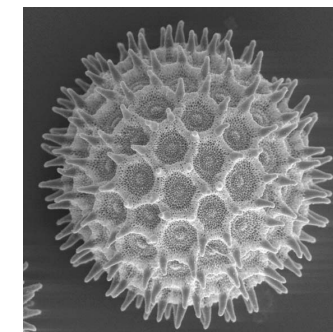
Ipomoea purpurea Urb.

NAME : Ipomoea purpurea Urb.
 FAMILY : Convolvulaceae
 LOCALITY : Kolkata & suburbs
 ALLERGENIC SEASON : Rainy season, Autumn (July – November)



Distribution : Through out India.

POLLEN TYPE :		Spheroidal , pantoporate			
SCULPTURAL TYPE :		Crassinexinous & spinulate			
SIZE IN μ	Pollen	Lumina	Muri	Sculptural element	Col.
	75 – 84 μ	-	-	Echinate, exine 4.5 - 5 μ m thick, spines 10 – 12 μ m long, breadth at base 4-5 μ m, bulbous & broad at base, gradually tapering towards apex, tip blunt. Surface ornamentation finely reticulate.	-



POLAR / EQUATORIAL RATIO :		0.88 (1.07 – 0.76)				
APOCOLPIUM :		-				
APERTURE		Form	Delimitation	Structure	No. of Aperture	Size / μ
	Ecto.	Porus	Distinct	Circular	Many	4.5 x 5 μ m
	Endo.	”	”	”	”	”