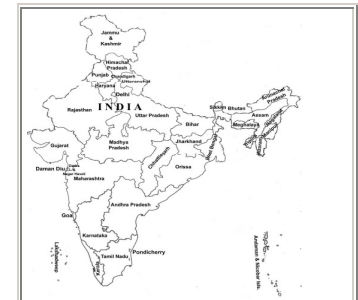


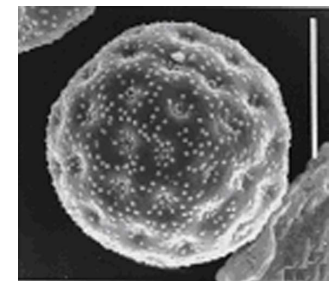
Chenopodium album L.

NAME : Chenopodium album L.
 FAMILY : Chenopodiaceae
 LOCALITY : Kolkata & suburbs
 ALLERGENIC SEASON : Winter (November – January)



Distribution : Through out India.

POLLEN TYPE :		Spheroidal, pantoporate			
SCULPTURAL TYPE :		Finely granular			
SIZE IN μ	Pollen	Lumina	Muri	Sculptural element	Col.
	25.8 (21.3-28.9) μ m	-	-	Finely granular, ectexine thicker than endexine; intine thin	-



POLAR / EQUATORIAL RATIO :		-				
APOCOLPIUM :		-				
APERTURE		Form	Delimitation	Structure	No. of Aperture	Size / μ
	Ecto.	Porus	Distinct	Margin smooth, operculum 1.5 μ m dia	50-70	2.5 μ m
	Endo.	"	"	-		