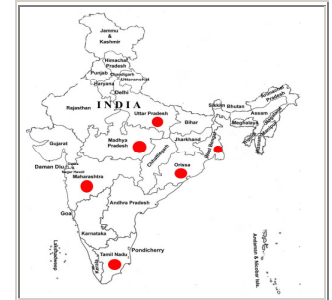


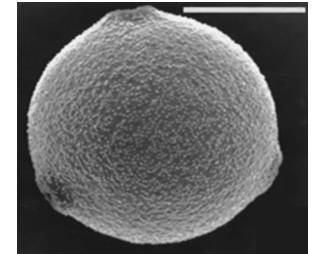
# Cannabis sativa L.

NAME : Cannabis sativa L.  
 FAMILY : Cannabinaceae  
 LOCALITY : Kolkata & suburbs  
 ALLERGENIC SEASON : Rainy season, autumn (June – September)



**Distribution :** Through out India. ( U P, W.B., Orissa, T.N., Maharashtra, M P )

POLLEN TYPE :		Spherical, sometimes suboblate to oblate; triporate			
SCULPTURAL TYPE :		Scabrate			
SIZE IN $\mu$	<b>Pollen</b>	<b>Lumina</b>	<b>Muri</b>	<b>Sculptural element</b>	<b>Col.</b>
	22 – 26 $\mu$	-	-	Scabrate, exine 1 $\mu$ m, intine relatively thin, much thickened oncus	-



POLAR / EQUATORIAL RATIO :		-				
APOCOLPIUM :		-				
APERTURE		<b>Form</b>	<b>Delimitation</b>	<b>Structure</b>	<b>No. of Aperture</b>	<b>Size / <math>\mu</math></b>
	Ecto.	Porus	Distinct, circular	Slightly aspidate with oncus below granular	3	$\pm 6 \mu$
	Endo.	”	”	”	”	”