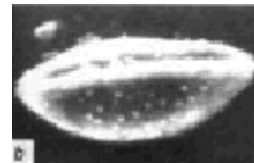
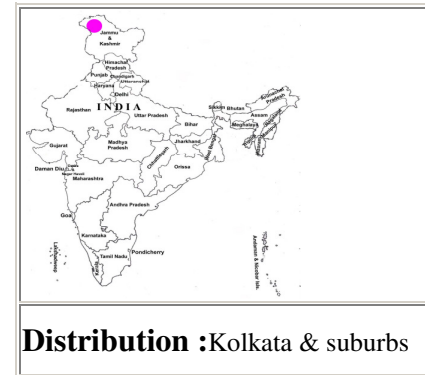


Borassus flabellifer L.

NAME : Borassus flabellifer L.
 FAMILY : Areaceae
 LOCALITY : Kolkata & suburbs
 ALLERGENIC SEASON : Spring (February – April)



POLLEN TYPE :		Monosulcate, oblate			
SCULPTURAL TYPE :		Verrucate (with wart like projections)			
SIZE IN μ	Pollen	Lumina	Muri	Sculptural element	Col.
	38 x 70 x 36 μ m	-	-	Verrucate with wart like projections	-

POLAR / EQUATORIAL RATIO:		- 1.42				
APOCOLPIUM:		-				
APERTURE		Form	Delimitation	Structure	No. of Aperture	Size / μ
	Ecto.	Sulcus	Distinct		Monosulcate	$\pm 38 \times 4 \mu$ m
	Endo.	”			”	