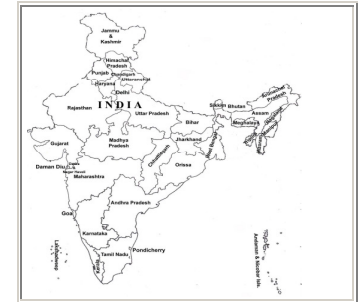


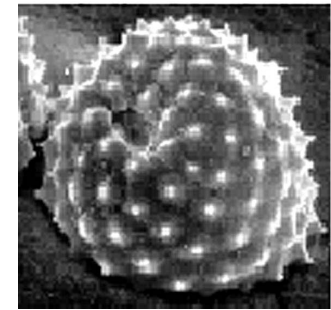
# Ambrosia artimesifolia L.

NAME : Ambrosia artimesifolia L.  
 FAMILY : Asteraceae  
 LOCALITY : North east India  
 ALLERGENIC SEASON : Rainy season (July - August); Autumn (Sept.-Oct.)



**Distribution :** Through out India.

POLLEN TYPE :		Oblate spheroidal, tricolporate			
SCULPTURAL TYPE :		Subechinate			
	<b>Pollen</b>	<b>Lumina</b>	<b>Muri</b>	<b>Sculptural element</b>	<b>Col.</b>
SIZE IN $\mu$	18.0(19.3-16.2)x 20.4 (17.9-21.3) $\mu$ m	-	-	Granular, beset with very short blunt spines, 1.7 – 3.4 $\mu$ m apart	-



POLAR / EQUATORIAL RATIO :		0.88 ( 1.07 – 0.76 )				
APOCOLPIUM :		-				
APERTURE		<b>Form</b>	<b>Delimitation</b>	<b>Structure</b>	<b>No. of Aperture</b>	<b>Size / <math>\mu</math></b>
	Ecto.	Colpus, Tapering	Distinct	One in the middle of each furrow, almost filling it, membrane smooth	3	4.0 x 1.6 $\mu$ m
	Endo.	Porate, circular	”	-	”	1.6-2 $\mu$ m